

# Waingroves Show

**September 12th, 13th & 14th 2025**

## **Friday 12th**

Entertainment at  
Waingroves Thorn Tree Inn

## **Saturday 13th**

Horticultural Show at  
Waingroves Community  
Centre and Events at  
Thorn Tree and Chapel

## **Sunday 14th**

Fun Run, Dog Show, Stalls,  
Games, BBQ and more at  
Waingroves Primary School



@TheWaingrovesShow or [www.waingrovesshow.com](http://www.waingrovesshow.com)

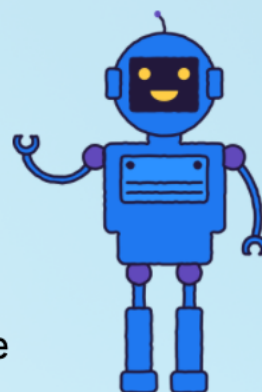


# Welcome to Waingroves Show

Waingroves Show is back for 2025 and we are hoping to bring you the best year ever! The summer has been amazing so far and hopefully it continues through September for a summery Village Show!

This year we have so much planned for everyone to enjoy from the Dako Flying Angels gymnastics display to a flypast from the legendary WWII Spitfire! We have a wrestling display and music from the wonderful Pure Steel and tonnes more planned too! We have all our usual fun and games across the weekend too, our fun run, the infamous waterwobble and our fun dog show!

And lets not forget the Horticultural Show too which now has 100 classes! We always have something new every year for you to try your hand at and this year we have chocolate brownies for you to make! (see page opposite) We also have the "build a robot" class in the children's section to be made of recycled materials. There is also the chance to have your photography included in the 2027 Woodland Trust Calendar! (See class 65)



We are so excited to be hosting Waingroves Show again for you this year and can't wait to see you all!



Supported by Ripley Town Council  
and Derbyshire County Council  
Also supported by Fisher Transport



## How to find us

**Find us on the day with your SatNav:**

Waingroves Primary School  
DE5 9TD  
Waingroves Community Centre  
DE5 9TF  
///zoomed.crumbles.butternut



**President:** Mr G Smith

**Chairman:** Mr R Smith.

**Treasurer:** Mr D Smith

**Vice Presidents:** Mrs A Challand, Mr & Mrs A Wright, Mr C Wright, Mr D Benniston, Mr J Stamp, Mr R Fisher, Mr J Kijewski, Miss D Ciupek, Mr C Plunkett

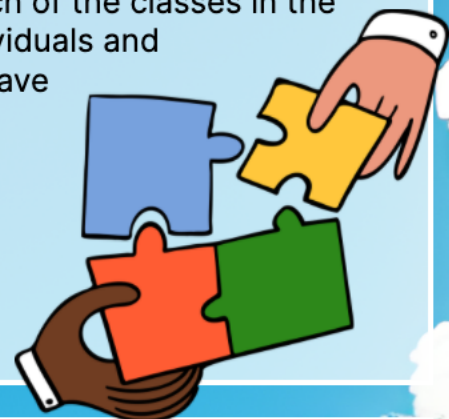


# Could you help the show?

If you'd like to help the Show financially then you can join our 200 Club! It costs £10 per year that enters you into a monthly prize draw where you could win £40, £20 or £5! Contact Ann and Malcolm on 01773 745118 to join.

Or perhaps you'd like to sponsor a class. The prize money for each of the classes in the Horticultural Show is funded through sponsorship from both individuals and businesses. If you would like to sponsor a class for only £6 and have your name or business displayed next to the class, please get in touch with us via the contact details shown below.

We are also looking for new volunteers to help run the Show. We meet once a month to discuss the upcoming events. If you would like to get involved, please get in touch either by the contact details below or via Facebook!



## Recipe Challenge! - Brownies

Follow the recipe below and enter your Brownies into our Horticultural Show - Class number 73. The recipe challenge is a 'Bake Off' style recipe with minimum instructions. We hope to bring you a different recipe each year.

### Ingredients:

140g/5oz unsalted butter  
200g/ 7oz plain chocolate (chopped into small pieces:  
225g/8oz caster sugar  
2 teaspoons vanilla essence  
2 large eggs, at room temp  
1 large egg yolk, at room temp  
85g/3oz plain flour  
A pinch of salt

### Instructions:

1. Heat oven to 180C/160C Fan.350F/ Gas Mark 4.
2. Use a 20cm/8" square tin
3. Melt together butter and chocolate.
4. Allow to cool.
5. Stir in sugar and vanilla.
6. Beat eggs and yolks and stir into the chocolate.
7. Add the flour and salt and add to the tin.
8. Bake for 30-35 mins until a knife inserted comes out with moist crumbs (but not wet batter) clinging to it.
9. Allow to cool and cut into 9 squares.





# What's on in Waingroves

## Waingroves Community Centre:

Litter picking - Meet at 10am to help keep the village clean and tidy! All welcome to help and equipment provided! \*Under 16s must be accompanied by an adult.

- 6th September
- 11th October
- 8th November
- 13th December

Community Association Annual General Meeting - Thursday 25th September

## Waingroves Methodist Church:

World's Biggest Coffee Morning for Macmillan

- Friday 26th September 10am - 12 noon

Harvest Festival - Sunday 5th October 10:45am

158th Chapel Anniversary - Sunday 26th October 10:45am

Remembrance - Sunday 9th November 10:45am

## Waingroves Show Committee (Meeting at Thorn Tree Inn):

Show Feedback Meeting - Monday 13th November 8pm

Annual General Meeting - Monday 10th November 8pm



- CLOTHING
- COSMETICS
- JEWELLERY
- BABY ITEMS
- HOME DECOR
- BACKPACKS
- ELECTRONICS
- PET SUPPLIES
- GARDEN ITEMS
- CHILDRENS TOYS
- HOUSEHOLD ITEMS
- CLEANING PRODUCTS

and much more!

Bringing you  
TOP QUALITY  
products at  
BARGAIN  
PRICES  
in a  
COST OF  
LIVING CRISIS



Metal lady  
COLLECTIONS & RESALES

WE  
BUY  
AND  
SELL

Scan here  
TO JOIN OUR  
FACEBOOK GROUP



COME JOIN OUR MONTHLY LIVE IN OUR GROUP!

Kay: 07891841990    Lacey: 07814536917    Email: metal-lady@outlook.com



# Friday 12h September

Kicking off the Show Weekend we have a fantastic night of music at Waingroves Thorn Tree Inn. This year we have the amazing LickSquid playing for us and we honestly can't wait!



Friday 1st September  
8:30pm onwards  
FREE ENTRY



**PHOTOGRAPHS/VIDEOS** - Waingroves Show will be taking photographs and videos throughout the Show Weekend and at other events. These photographs and videos will be used for Show purposes only for promotion of the Show and for reporting and recording of events. This may include using them on our website and social media pages, along with displays at other events. Please note that other groups and also individuals may also take photographs and videos and potentially share with others. If you are not comfortable with the above, please speak to the person taking the photographs/videos or speak to an event



## WarmGlow

Heating & Plumbing

**Keeping you safe & warm**

Call us 01773 603645  
or 07944 302155

WarmGlow Heating &  
Plumbing, 10 Manor Court,  
Riddings, Derbyshire, DE55  
4DG

Email: [andrew.warmglow@yahoo.co.uk](mailto:andrew.warmglow@yahoo.co.uk)  
Visit: [warmglowservices.co.uk](http://warmglowservices.co.uk)





# Saturday 13th September

## Horticultural Show at Waingroves Community Centre

Come and enter in Waingroves Show Horticultural Show! The Horticultural Show is a celebration of everything you've been making in the last year... paintings, photography, vegetables, flowers, baking, handicrafts and even our amazing Children's Section!

And if you're new to this there will be lots of volunteers on hand to help you out!

Staging: 10am - 12:45pm

Viewing: 3:45pm - 7pm

Viewing Admission - 50p

All entries cost 25p.

Children's Classes Free.

For full details, turn to pages 12-13.



## 1pm - 4pm - Entertainment at the Thorn Tree Inn

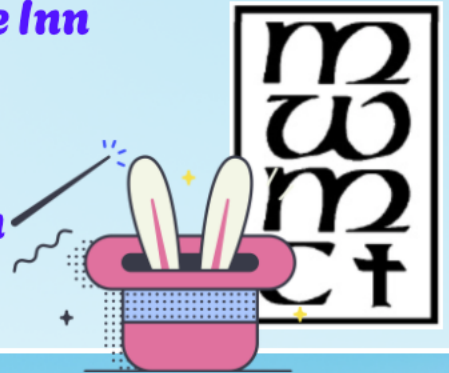
CJ the Magician, bouncy castle and more!

Music from Rowan Marsh in the evening!

Food from Souvlaki To Go!

## 11am - 2pm - Waingroves Methodist Church

Games, stalls, refreshments, lunches, local artisan craft fair featuring local crafters and artwork, exhibiting and selling



## 1:15pm onwards - Water Wobble at Waingroves Methodist Church

How much water do you think you and a friend can carry in water balloons on a pole?

Starting at Waingroves Methodist Church. Oh... and you will get wet! Cash prizes for most water carried!

Entries taken from 1:15pm

Start time 1:45pm

£2 per team

Junior Team - 2 persons aged 15 or under.

Adult Team - 2 persons aged 16 and above

OR

1 person aged over 16 with a child of any age.

Teams of 2 only.



A signature from a parent or guardian will be required for children under 18.



# Sunday 14th September

## 10am - Open Air Church Service

Open air church service held at Waingroves Primary School. All welcome.

## 11:30am - Entries taken for the Fun Dog Show

Show off your handsome and beautiful doggies in the Fun Dog Show and maybe prove to your friends that you do have the 'Best Six Legs'! Held on Waingroves Primary School playground. For more information, see page 9.



## 10am - 4:15pm - Horticultural Show Viewing

Horticultural Show open to the public at Waingroves Community Centre. 50p Entry.

Come and see the winners and you can also collect your prizes!



## 11am - Fun Run

An easy course for all the family. Come and have a go and even come in fancy dress too! Best fancy dress will win a cash prize! Look out for a team in fancy dress who will be collecting money for Waingroves Methodist Church's Food Bank and Christmas Charity.

Entries taken from 10:30am at Waingroves Primary School. 50p per person. A signature from a parent or guardian is required for children under 18.



## Privacy Policy

Waingroves Show respects privacy and is committed to maintain personal data in line with the GDPR 2018. For our full privacy policy, please see our website [www.waingrovesshow.com](http://www.waingrovesshow.com). Please note that due to data protection, any under 18 entering the Horticultural Show, Water Wobble, Fun Run, or Dog Show will require a signature from a parent / guardian on the applicable entry form.

This event has been supported by the PPL PRS Charity and community discount scheme. PPL PRS licenses the use of copyright music across the UK, giving businesses and organisations the permission they need to play the music they want. For more info, visit [www.pplprs.co.uk](http://www.pplprs.co.uk)

All money raised over the weekend goes to supporting good causes.



## 1:30pm - 4pm - Entertainment at Waingroves Primary School

Army Cadets Marching Band  
CJ the Magician  
Dako Flying Angels  
Pure Steel  
Wrestling Ring  
Climbing Wall  
Giant Inflatables and Rides  
Battle of Britain Memorial Flight Flypast - Spitfire  
BBQ, Beer Tent, Cream Teas, Stalls and much,  
much more!



## 4:30pm - 5:15pm Collection of Exhibits

Come and collect your exhibits and prizes from Waingroves Community Centre.

## 5:45pm Auction and Grand Prize Draw at Waingroves Community Centre

Remaining exhibits from the Horticultural Show will be auctioned off so come along for your chance to purchase some prize winning cakes, fruit, veg and flowers!

The raffle will be drawn too so come along and see if you're one of the lucky winners!

Raffle tickets are available all weekend from the Community Centre and on the School field on Sunday.

**First Prize - £100! Kindly donated by Waingroves Thorn Tree Inn!**

There are lots of prizes up for grabs so get your tickets and join in.



## Waingroves Methodist Church

Sunday service & Sunday school every Sunday at 10:45am

Stay & Play parent and toddler group for ages 0 to 3+ years - Wednesdays 1:15pm-2:45pm during school term. Costs £2.50 per family including drinks for parents/carers and healthy snacks for children.

Community Cafe - Every Friday 10am - 12 Noon



## How to find us

**Find us on the day with your SatNav:**

Waingroves Primary School  
DE5 9TD

Waingroves Community Centre  
DE5 9TF

[///zoomed.crumbles.butternut](http://zoomed.crumbles.butternut)





# Sunday 15th September - Fun Dog Show

Waingroves Primary School - Entries taken from 11:30am  
Entry fee - £1.50 per class, 3 classes for £4, 5 classes for £7  
Puppies under six months old on the day of the Show are eligible for Class 1, Junior Handling and Novelty Classes. Judge - Daniel Aneke

## Classes

### Puppy Walk

1) Puppy walk - for puppies under 6 months

### Pedigree Section

- 2) Any variety puppy (6-12 months)
- 3) Any variety sporting
- 4) Any variety non-sporting
- 5) Any variety open
- 6) Any variety veteran (over 7 years)

### Junior Handling

- 7) Best junior handler - ages 6-16

## Novelty Section

- 8) best non-pedigree veteran (over 7 years)
- 9) Best non-pedigree puppy (6-12 months)
- 10) Best six legs
- 11) Most handsome dog
- 12) Most beautiful bitch
- 13) Dog who looks most like its owner
- 14) Best trick
- 15) Waggiest tail
- 16) Dog the judge would most like to take home
- 17) Best rescue dog (stray or from a rescue centre)
- 18) Best x-breed

Best in show and best puppy also judged.

A signature from a parent or guardian will be required for children under 18.

For more information contact Margaret Sutcliffe on 07917 854486



## Sponsored by...

### Pets & Friends Heanor

Heanor Road, Loscoe, Heanor. 01773 534211

### Pets & Friends Alvaston

810 London Road, Alvaston. 01332 752011

### Pets & Friends Chaddesden

Unit 7, St. Mary's Retail Park. 01332 679200

### Pets & Friends Hucknall

Ashgate Retail Park, Hucknall. 01159 681888

**Pets  
& friends**  
SINCE 1974

[petsandfriends.co.uk](http://petsandfriends.co.uk)

Schedule: Lynsey Booth - 07999571573



# Waingroves Show 2025

**PRIZE MONEY - 1st £3, 2nd £2, 3rd £1**

## **Class No Vegetables and Fruits (NVS Silver Medal)**

- 1 Potatoes, plate of five
- 2 Kidney beans, six
- 3 Longest runner bean (one prize £5)
- 4 Carrots, two, with tops trimmed to 75mm
- 5 Beetroot, three with tops
- 6 Leeks, two
- 7 Onions, three with tops, grown from sets
- 8 Onions, three with tops, grown from plants
- 9 Heaviest onion, top trimmed to 125mm (one prize £5)
- 10 Cabbage with stalk, dressed to 75mm
- 11 Courgettes, three
- 12 Tomatoes, plate of five
- 13 Tomatoes, plate of five, cherry
- 14 One cucumber
- 15 Apples, plate of four dessert
- 16 Apples, plate of four cooking
- 17 Pears, plate of four
- 18 Plums, plate of eight
- 19 A plate of one type of berry, max plate size 200mm dia.
- 20 Any other vegetable (not covered in other classes)
- 21 Any other fruit (not covered in other classes)
- 22 Most unusual or fun shaped vegetable or fruit
- 23 One vegetable, one flower

## **Class No Dahlias (NDS Silver Medal)**

- 24 Vase of three poms, 55mm or under, any variety
- 25 Vase of three ball, small or miniature (up to 170mm)
- 26 Vase of three medium decorative, any variety (up to 220mm)
- 27 Vase of three medium cacti or semi cacti, any variety (up to 220mm)
- 28 One giant or large, any variety
- 29 Vase of three small decorative, any variety
- 30 Vase of three small cacti or semi cacti
- 31 Two vases of three dahlias, any or one variety

## **Class No Roses**

- 32 One single rose
- 33 One stem of a cluster flowered rose

## **Class No Cut Flowers**

- 34 Sweet peas, vase of six, any or one variety
- 35 A single flower or stem (spike, bloom or spray)
- 36 Vase of three gladioli, any or one variety
- 37 Any three flowers grown by a village resident

## **Class No Pot Plant (Indoor or Outdoor)**

**(250mm dia. pot max)**

- 38 One pot plant, flower or fruit (e.g. orchid, fuchsia, chilli)
- 39 One pot plant foliage (e.g. ivy, fern)
- 40 One pot cacti or succulent

## **Class No Chrysanthemums**

- 41 Vase of three, sprays terminal or compound
- 42 Vase of three, reflexed (large or medium), any variety or varieties
- 43 Vase of three,, intermediate (large or medium), any variety or varieties
- 44 Vase of three, incurved (large or medium), any variety or varieties)
- 45 One bloom, any variety, large or medium

## **Class No Floral Art (Fresh Flowers\*)**

- 46 Floral arrangement in a tea cup and saucer
- 47 Floral arrangement representing a wedding anniversary
- 48 Floral arrangement in a basket, using garden flowers only (maximum basket size 250mm dia. or width)

\*For environmental reasons we encourage entrants to use alternatives to oasis

## **Class No Arts and Crafts**

- 49 Knitting, any item, any yarn
- 50 Crochet, any item, any yarn
- 51 An embroidered item (including cross stitch)
- 52 Dressmaking—a sewn garment
- 53 Soft toy
- 54 A wooden item
- 55 Handmade greetings card
- 56 Any other handicraft (fabric based)
- 57 Any other handicraft (any other medium—not fabric)
- 58 Painting or drawing
- 59 A painted rock (max 100mm/4 inches)
- 60 Compose a limerick or short poem on Waingroves
- 61 Photography, colour, subject—portrait
- 62 Photography, colour, subject —scenic
- 63 Photography, colour, subject — any other
- 64 Photography, black and white, subject —any
- 65 Photography, colour, subject—photograph of/in Waingroves Woodland (This may be used in the 2027 Woodland Calendar)

All photographs to be A5 maximum (inc. any border) un-mounted

## **Class No Home Produce**

- 66 Homemade loaf—hand made or machine made
- 67 Fruit Pie
- 68 Victoria Sponge—175g (6oz), raspberry jam filling, caster sugar topping
- 69 A cake containing fresh fruit or veg e.g. banana loaf, carrot cake (please label)
- 70 Six scones, plain
- 71 Six flapjacks
- 72 Four standard sized decorated cupcakes (all elements to be edible). Judged on appearance
- 73 Recipe challenge (See page 3)
- 74 Jar of jam, jelly, marmalade or curd 500g (1lb)
- 75 Bottle of homemade wine
- 76 Bottle of home brewed beer/lager
- 77 Bottle of home brewed cider
- 78 Bottle of homemade spirit based beverage
- 79 Jar of chutney
- 80 Jar of pickle

All drinks to be in clear bottles and resealable e.g. flanged cork, screw top or swing top

## **Class No Junior Section 1st £2, 2nd £1, 3rd 50p**

- 81 An edible necklace
- 82 Floral arrangement in a jam jar, garden flowers only
- 83 Photography A5 maximum, colour or black and white, un-mounted
- 84 Photography—best “selfie”
- 85 Compose a limerick or short poem on Waingroves
- 86 Hand made greetings card
- 87 A painted rock (max 100mm/4 inches)
- 88 Picture in paint, crayon, pencil or felts
- 89 Collage made of natural materials e.g. leaves, twigs, dried flowers, stones
- 90 Any other handicraft
- 91 A robot model made from recycled materials (max 300mm high)
- 92 Four decorated cupcakes or sponge buns
- 93 Miniature garden, max 35cm diameter or long or square (all to be hand made)
- 94 Vegetable monster (all vegetables or fruit)
- 95 A decorated wooden spoon
- 96 A mask
- 97 Colouring competition (See page 20)
- 98 Largest sunflower head. Diameter of centre measured One class all age groups
- 99 A vegetable grown by the child One class all age groups
- 100 A decorated biscuit (Biscuit can be homemade or bought) Special class for age 5 and under



# Horticultural Show Entry

## How to enter:

Come along to Waingroves Community Centre on Saturday 13th September between 10am and 12:45pm with the items you would like to enter. Fill out the entry form on the right before you come along and bring it with you on the day to hand to the volunteers on the door. It's one form per person (including children) and please note also that any under 18s will need a signature from a parent/guardian. Entry is 25p per exhibit (except children's classes which are FREE!!!). All children's entries also receive a free chocolate bar (and yes... that's per entry - enter 20 items and you'll get 20 chocolate bars!!!).

You can enter as many classes as you like and as many items in each class as you like too. All classes are open to both Waingroves Show residents and non-residents alike (except class 37). And if you need more entry forms, they are available for download on our website [www.waingrovesshow.com](http://www.waingrovesshow.com).

Prize money will be paid out on Sunday 14th September after 10am. Exhibits should be collected back again between 4:30pm and 5:15pm on Sunday 14th September. However, if you would like to leave any exhibits, they will be auctioned off to help towards Show funds.



## Horticultural Show Rules:

1. Entry fee 25p per exhibit - Except Children's Classes which are free.
2. All exhibits and their staging items at the show remain at the risk of the exhibitor.
3. Exhibits to be removed between 4:30pm and 5:15pm on the Sunday of the Show.\*
4. Exhibitors to provide their own plates, vases, etc.
5. No exhibits to be dressed in the hall due to lack of space - a separate staging area is provided.
6. Prize money paid out Sunday of Show Weekend at Waingroves Community Centre.
7. Awards will be collected with prize monney.
8. Points awarded: 1st - 3 points, 2nd - 2 points, 3rd - 1 point.  
(In the event of a tie, the winner is based on the number of 1st prizes. If the number of 1st prizes is equal, award based on number of 2nd prizes. In the event of a tie, trophy will be shared.)
9. All trophies, cups, plaques etc to be returned to the Show Entertainment or Schedule Secretary by 1st August next year.
10. Judges' decision shall be final. (All entries judged by independant judges)
11. No exhibits staged in previous years to be staged again.
12. All classes open to residents and non-residents of Waingroves (Except class 37)

\*Remaining exhibits will be auctioned off in the Community Centre at 5:45pm on the Sunday of Show Weekend.



## Trophies:



President's Shield.....	Most points in show
J Lowrey Village Trophy.....	Most points by village resident
The Secretary's Trophy.....	Most points in floral art
The H Allsop Memorial Trophy.....	For onions grown from sets
The Brian Lavender Trophy.....	For onions grown from plants
The Julie Lavender Trophy.....	For three gladioli
JR Maund Shield.....	For heaviest onion
K Walker Trophy.....	For floral art
Lynda Swindell Trophy.....	For best miniature garden
Arthur Harrison Trophy.....	For home brew
The G Pearson Trophy.....	Most points in children's classes
The Show Plaque.....	Most points in home produce classes
Ivy Denman Trophy.....	For crochet
Waingroves Primary School Trophy.....	Most points by Waingroves Primary School pupil
The Thorn Tree Sports & Social Club Plaque.....	Most points in art and craft classes
The Sunflower Cup.....	For largest sunflower head
Maureen Lavender Bowl of Friendship.....	Most points in cut flowers
John Bamford Vase.....	For best pom dahlia
Sew N Crafts Cup.....	Best exhibit in Dressmaking
Les & Barbara Green Vase.....	For best bloom in Show
Dave Beeston Award.....	For best loaf
The Mr & Mrs E Smith Cup.....	Most points in dahlia classes
The T H Coope Rose Bowl.....	Most points in rose classes
The G Lavender Cup.....	Most points in pot plant classes
The Thorn Tree Cup.....	Most points in chrysanthemum classes
1972 Cup.....	Most points in vegetables and fruits classes

Class Number	Number of Entries	Entry Fee	Waingroves Show Entry Form			
			Name			
			Address			
			Phone Number			
			Age for Junior Entries (Tick Box)	8 and Under	9 to 11	12 to 15
			Waingroves Primary School Pupil?			
			If under 18, name and signature of parent/guardian			
			Name			
			Signature			
Total			Show Number (For Show Use)			

Waingroves Show respects privacy and is committed to maintain personal data in line with the GDPR May 2018. For our full privacy policy, please see our website [www.waingrovesshow.com](http://www.waingrovesshow.com)



# Waingroves Drama Group

Could you help Waingroves Drama Group?  
Oh yes you can!

Our previous Chair and writer/director have both recently stepped down after several years in these roles. We are looking for people to take on these positions and help with the running of the Drama group.

If you would be interested or would like some information of what it involves, contact secretary Ann Haddon on 01773 745118 or email [annhaddon@btinternet.com](mailto:annhaddon@btinternet.com).



# Daffodil Show 2026

Every year in Spring Waingroves Show hosts the Daffodil Show. For this event, we sell a special daffodil bulb! This is a specially chosen

daffodil to enter into the Daffodil Show and makes a wonderful surprise when it finally blooms in Spring. You can pick up your special Show Daffodils at

Waingroves Community Centre after the judging on Saturday 13th September!



# Waingroves Community Centre

Registered Charity 517734

## Are you looking to hire a community room?

Waingroves Community Centre is available to hire for parties, meetings, classes or workshops. For as little as £8 per hour, slots are available throughout mornings, afternoons and evenings and party rates start from just £55. Kitchen facilities and a licensed bar is available.

## Would you also be able to lend a hand?

The Centre is managed by a team of volunteers who run the Centre, provide day to day maintenance and also organise a number of events such as the Wassail in conjunction with the Woodland Trust.

If you would like to get in touch about volunteering or hiring, please contact Sue on 01773 742842 or [susan\\_eley@sky.com](mailto:susan_eley@sky.com)



# Waingroves Primary School

At Waingroves Primary School we are proud to be recognised as a good school by OFSTED:

- Waingroves Primary School continues to be a good school. Pupils are happy to attend the school. Leaders have created a caring culture based on mutual respect. Everybody is made to feel welcome in the school.
- Staff and pupils share high expectations for behaviour and for what pupils can achieve. Pupils try hard and behave well in lessons. They work and play together enthusiastically. Pupils enjoy positive relationships with teachers. They say that they feel safe and cared for.
- Pupils know who they can talk to if they are worried about anything. They trust that teachers and other adults will help them resolve any problems quickly.
- Pupils benefit from many opportunities to work with others. In the early years, teachers plan activities for children to work together. This helps them to develop important social and communication skills.
- In key stages one and two, pupils have many opportunities to work with 'learning partners'. Pupils gain the confidence to talk about their own ideas and to listen to others. They display mature attitudes and are respectful of each other.



OFSTED Report July 2023

Please contact Mrs Challand (Headteacher) on 01773 744106



## Ripley Christmas Market & Lights Switch on

SUN  
23  
NOV  
2025

Free children's rides  
Free face painting  
Food & Drink  
Amber Sound FM  
Stalls from local independent businesses  
Performances from local groups.  
Costumed characters  
Santas Grotto



12 noon - 6.30pm  
Ripley Market Place  
& Oxford Street  
Ripley, DE5 3BT

FOR MORE DETAILS VISIT  
[WWW.RIPLEYTOWNCOUNCIL.GOV.UK](http://WWW.RIPLEYTOWNCOUNCIL.GOV.UK)

## Waingroves Woodland Trust

Would you like to help the Woodland?  
Working party meets Mondays @ 9.30am  
at the container at the end of Pit Lane. Or  
would you like to get involved with our  
committee? Or support us by becoming a  
member of the Woodland 200 Club  
lottery? For more details find us on  
Facebook or on our website

[www.waingroveswood.com](http://www.waingroveswood.com)  
Registered charity 1141556





# Groups In Waingroves

## Friends and Neighbours Concert Party

Most Tuesdays 7:45pm. A friendly, very informal singing group at Waingroves Methodist Church.



## Girl Guiding

At Waingroves Community Centre:

Brownies -

Thursday 6pm - 7:30pm

Guides -

Tuesdays 7:15pm - 8:45pm

Rangers -

Tuesdays 7pm - 8:30pm



At Codnor Methodist Church:

Rainbows -

Tuesdays 4pm - 5pm

Brownies -

Tuesdays 5:15pm - 6:45pm

With Guiding, girls have fun, adventure and space to discover their potential. All groups meet in term time. If you would like to volunteer or your daughter is interested, please visit our website - [www.girlguiding.org/get-involved](http://www.girlguiding.org/get-involved)

## Fitness Classes

Every Wednesday evening 6pm at Waingroves Community Centre. A 45 minute fitness class in a circuit based style incorporating full body workouts for all abilities in a fun and welcoming environment. All classes £5 each. Contact [ianp006@gmail.com](mailto:ianp006@gmail.com) or Ian Painter on Facebook messenger for more information.



## Just Good Friends

Just Good Friends Club is a social hub for adults with learning disabilities based at the community centre.

In addition to our fun craft and games activities we also promote transferable skills, such as cooking, travel training and community projects.

We also provide days out and weekends away throughout the year. Costs are £40 a day (10am-3pm) which includes costs for activities in hub time.



For more information contact Gemma 07519709348 or [gem@jgfc.org.uk](mailto:gem@jgfc.org.uk)



## Waingroves Methodist Church Table Tennis Club

Mondays 7pm-8.30pm Coaching for juniors  
Thursdays 7pm-9pm – All ages practice  
\*\*Derby & District Table Tennis League Premier Division winners  
2024/2025\*\*  
For more details contact John Grace on 01773 744661



## Sound Healing by Katie

My name is Katie, I run relaxation and sound healing sessions at Waingroves Methodist Church. The aim of a session is to create a safe space where people listen to the soothing sounds of Himalayan singing bowls, gongs and chimes as they are guided to deep relaxation, emotional balance and inner peace with like minded people in a soundbath. We meet on Friday evenings 7pm-8pm on certain dates throughout the year. The cost for a session is £15 per person. For details of the next session please look for a poster in the church or follow soundhealingbykatie on social media.



Come & try  
your first  
class FREE

Turn back the clock with our fun  
and friendly exercise classes to  
improve your

- ✓ balance & confidence
- ✓ mobility & flexibility
- ✓ strength & independence

**MOVE IT  
OR LOSE IT!**®

Tuesdays 1.30-2.30  
Waingroves Methodist Church, Waingroves Road, Ripley DE5 9TB  
Cost £6  
Parking Available  
Call/Text Julie: 07786 923077

## Ripley Rotary

Ripley Rotarians are pleased to sponsor some exhibits in this year's show. We wish you all an enjoyable and interesting weekend. Rotary is a worldwide non-political, non-religious organisation of volunteer people which welcomes all members of the community. Ripley Rotary is involved in both global and local initiatives and projects ranging from Ripley Hospital, local schools and support for care home residents, to fundraising for Aquabox at Wirksworth, provider of clean water equipment in disaster areas across the world. More information on [www.rotarygbi.org](http://www.rotarygbi.org) or email [ripleyrotaryclub@gmail.com](mailto:ripleyrotaryclub@gmail.com)

**Rotary**   
Great Britain & Ireland





**Show Weekend Events**  
**Saturday 13th September**  
 Music from Rowan Marsh  
 Food from Souvlaki To Go

**Sunday 14th September**  
 Music from Molly May Hodson

Weekly Quiz - Wednesday 8pm Start  
 Friday Bingo - Friday 8pm Start  
 Look out on Facebook for weekly entertainment  
 Newly Refurbished!!!

**@Thorn Tree Waingroves**





MONDAY - FRIDAY 8AM - 4PM

Cherry Tree Cottage Farm, 210 Peasehill, Ripley,  
Derbyshire, DE5 3JQ  
01773 742847

Info@gro-welldirect.co.uk

www.gro-welldirect.co.uk

# Quality Compost, Quality Fertiliser, Quality Advice.



Crop protection, Lawn,  
care, Growing media, Pest  
& Disease control, Seeds,  
Garden Sundries, Weed  
Control, Fertilisers,  
Pots & Containers.



&



## Uk Grown Plants, Veg, Bedding, Alpines, Shrubs, Roses and Perennials.



@growelldirect



@Leenvalleyplants

Schedule: Lynsey Booth - 07999571573



# Colour me in!

Colour me in and enter me for free in Waingroves Show!



Entrants must be aged 15 and under. See Class 97 in the centre pages.  
Download extra copies of me at [www.waingrovesshow.com](http://www.waingrovesshow.com)